

fan
diffuser

kō

@aroma

[ENG]

Instruction manual

Thank you for purchasing this Aroma product.
Please read this user's manual thoroughly and make sure you understand the contents before using the product.

Warning

- Only use the supplied USB cable. If you use a USB cable other than the one supplied, it may cause fire due to heating etc.
- Make sure the USB cable is securely connected to both the diffuser and the USB port (or USB adapter before plugging in to an electrical socket). Loose connection may cause electric shock or fire.
- Unplug the USB cable from power outlet when it is not connected to the diffuser unit. Otherwise it may cause fire or smoke.
- When using batteries please make sure they are installed correctly and do not plug in USB unless both batteries are rechargeable type. Do not use different types of batteries to operate the diffuser. Failure to follow this may damage the diffuser, or cause heat, battery leakage, and injury/property damage.
- If you experience an unusual odor or equipment abnormality, please stop using it immediately. Disconnect the USB cable and consult the sales outlet from which you purchased the unit.
- Adult supervision required.
- Please keep out of reach of children. It may cause unexpected injury, electrical shock, device malfunction or accidental ingestion.

- If you feel unwell during use, stop using it immediately and rest in a well-ventilated location. Seek medical attention if you continue to feel unwell.
- Do not plug or unplug the USB power adapter with wet hands. It may cause electric shock.
- Do not heat, bend, pull, twist, or otherwise damage the USB cord. It may cause electric shock.
- Do not insert metal such as a wire into the diffusing part. It may cause electric shock, short circuit, or fire.
- Avoid adding too much essential oil to the pad, as oversaturation may impair diffusion or damage the diffuser. If essential oil enters inside, it may cause malfunction, fire or electric shock.
- Do not use chlorine or alkaline detergent for cleaning. Toxic gas may be generated from the detergent and cause health issues.
- Do not use, store or leave it in a place exposed to direct sunlight. It may cause discoloration, deformation, or breakdown.
- Do not disassemble, remodel, or repair. It may cause fire, electric shock, or injury. For repair, please consult the sales outlet from which you purchased the unit.
- Do not use near open flames. It may cause malfunction, deformation, discoloration or fire.

Precautions for use

- When not using the diffuser please unplug the cable from a computer USB port as it may reduce the life of the battery.

- Place the device upright in a location where it will not fall. Failure to do so may cause injury or malfunction.
- If essential oil comes in contact with the diffuser unit, clean the area thoroughly to avoid discoloration or deformation of the diffuser.
- When changing the oil pad, please be careful not to get essential oil on your skin. If essential oil comes in contact with your skin, please wash the area thoroughly.
- When not using the diffuser for an extended period of time, please clean the diffuser using the provided instruction manual.
- Failure to adhere to the following will result in the warranty being voided and may cause damage to the diffuser unit:
 - Only use 100% pure natural At-Aroma essential oils with this diffuser.
 - Always keep the diffuser upright, even when not in use.
 - Always keep the opening above the diffuser and the vents on the bottom of the diffuser free of debris and blockage.
- Do not immerse the main unit in water or wash it entirely. If water enters inside, it may cause a short circuit or malfunction.
- Do not use near medical equipment. Radio waves in the main unit may affect medical electronic devices.
- Do not place the product near an electronic key. Radio waves of the main unit may interfere with and cause an electronic key to malfunction. Please separate the main body from an electronic key by 30cm or more.
- Do not place it near an antenna. Please set it away from any antenna. If installed nearby, there may be noise on television or radio.

*For precautions on using the oil, please refer to the notes on essential oil.

Please follow the laws of the country or region where the product is used when disposing of the main unit, accessories and replaced parts.



This product conforms to the product liability laws as stated within CE certification. Therefore, be sure to follow the information listed in the various manuals and specifications because the product will not be in compliance with the CE Marking if the parts used, installation environment, etc. are changed.



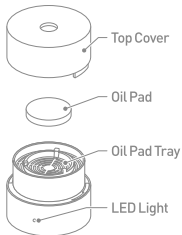
Please remember to respect the local regulations: hand in the non-working electrical equipments to an appropriate waste disposal center. The packaging material is recyclable. Dispose of the packaging in an environmentally friendly manner and make it available for the recyclable material collection-service.

Contents

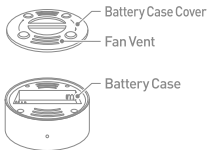
- 1) Main Unit (Oil Pad included) ×1
- 2) USB Cable ×1
- 3) Replacement Oil Pad ×1
- 4) Instruction Manual ×1

Part names

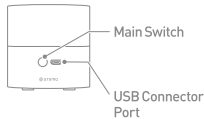
Main Unit



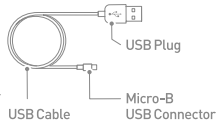
Unit Bottom



Unit Exterior



Accessories



Designated aroma oil

Please use 100% pure natural At-Aroma essential oils with this diffuser.

Using other essential oils, perfumes, or fragrances may cause the diffuser to not operate properly and will void the warranty.

This diffuser is made from material that is resistant to damage caused by essential oils, but it is recommended to keep the diffuser clean at all times. This is to prevent corrosion caused by extended exposure to essential oils.

Preparation

This product is not rechargeable. Please use the USB cable provided or 2 AAA batteries with the diffuser.

1. Connect the Micro-B USB connector of the USB cable to the USB connector on the main unit.

⚠ Please note the direction of the USB connector when connecting.

2. Connect the USB plug of the USB cable to the USB port of a PC or a USB power adapter.

⚠ Please purchase separately a USB power adapter that can supply output current of 0.5A or more.

⚠ When connecting to a PC, please connect with the PC fully started up. It may not operate even if connected to a PC in standby mode.

■ Using AAA batteries (Turns off in 20 minutes)

It automatically turns off if operating only on AAA batteries after 20 minutes.

1. Remove the battery case cover. Twist the cover clockwise (the direction of the 'open' arrow), take the battery case cover off.



2. Put batteries in battery case.

Use rechargeable or Alkaline AAA batteries (×2). Make sure the batteries are inserted into the unit in the correct orientation.

3. Replace the battery case cover.

Put the battery case cover back on the battery case and rotate counter-clockwise (opposite the 'open' arrow).

⚠ If both USB and rechargeable batteries are installed, the unit will prioritize the USB cable's power, in order to minimize the consumption of battery life.

⚠ Rechargeable batteries cannot be recharged through this diffuser. Please use a battery charger.

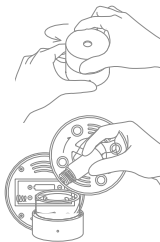
How to operate

1. Rotate Main Unit Cover counter-clockwise and remove.

⚠ Please use both hands when rotating the top cover.

2. Add 3-5 drops of 100% pure natural At-Aroma essential oil to the pad.

⚠ Over saturation of the pad may cause oil leakage, fire, or damage to the unit.



3. Replace Main Unit Cover by rotating the cover clockwise on the unit.

4. Make sure diffuser is on a stable level surface and press the Main Switch to turn the diffuser on.

⚠ Make sure the bottom of diffuser is free from obstruction, such as carpet, cloth, or other articles that could block the fan vent.

5. Add essential oil if the scent begins to fade.

6. Press the main switch to turn off the diffuser. (LED light also turns off.)

Maintenance

[Cleaning Main Unit]

Use a soft cloth to wipe the unit. If stained, use a mild soap or detergent and gently wipe the area. Be sure to wipe off any residual soap from the diffuser.

⚠ Don't wash USB cable or Main Unit with water.

⚠ Avoid using alcohols, thinner, and other strong chemical products.

[Replacing Oil Pad]

Once oil pad has become stiff/discolored, or when changing scent to a different essential oil, we recommend replacing the oil pad.

⚠ Do not wash the oil pad.

⚠ After replacing the oil pad, wash your hands if any essential oil comes in contact with your skin.

⚠ Oil pads are available for purchase.

Troubleshooting

○ Issue : Main Switch does not turn on

○ Approach :

Is the USB power supply properly connected?

→ Check the USB cable. Unplug and plug back in the USB cable.

Are the batteries installed correctly?

→ Make sure the battery orientation is correct.

Are the batteries out of power?

→ Replace the batteries or recharge them (rechargeable ONLY).

○ Issue : Does not diffuse

○ Approach :

Is the Oil Pad installed correctly?

→ Make sure the oil pad is installed correctly and has the appropriate amount of essential oil on it.

Has the correct amount of essential oil been added to the pad?

→ Please use only 3-5 drops of essential oil.

Is anything blocking the opening on the top of the diffuser or the fan vents on the bottom?

→ Make sure the top cover and bottom of diffuser are free from obstruction, such as carpet, cloth, or other articles that could block the fan vent. If either opening is blocked the diffuser will not diffuse.

Is the essential oil/oil pad old?

→ If you are using an old essential oil or oil pad, please use a new essential oil or new oil pad.

Is surrounding air/circulation preventing diffusion?

→ The scent travels based on surrounding circulation, so if scent is weak or not present, place diffuser in a different location.

○ Issue : Oil is leaking

○ Approach :

Has the correct amount of essential oil been added to the pad?

→ Please use only 3-5 drops of essential oil on oil pad. Oversaturation can lead to leakage.

○ Issue : Diffuser stopped suddenly

○ Approach :

When using the battery, has more than 20min elapsed?

→ When using batteries, the diffuser will auto-turn-off after 20min.

Product specifications

Model	fan diffuser kō
Power	DC 5 [V] (USB cable included) or AAA battery × 2 (Alkaline or rechargeable / sold separately)
Current ※1	30m [A] or lower
Auto-Off	Turns off in 20min when using battery
Size	Diameter 65 × Height 65 [mm]
Weight	94[g] (Excluding batteries, USB Cable)
Material	Main Unit: PP Oil Pad: PET
Maximum diffusing capacity	Approx. 10m ² / 100 ft ²
Operating temperature	+10 ~ 40° C / +50 ~ 104° F, 20 - 90% RH (without condensation)
Storage temperature	-5 ~ 60° C / +23 ~ 140° F, 20 - 90% RH (without condensation)
Operating environment	Indoors (not in a high temperature, high humidity or direct sunlight)

USB Cable Length	1m / 3.2 ft
Contents	USB cable ×1 Replacement oil pad ×1 Instruction manual Warranty card (this document) ×1
Consumables	Replacement Oil Pad (sold separately)

※1 It will be the maximum value during operation.
Specifications and appearance are subject to change without notice for improvement.

Warranty

1. In case of a product breakdown during the warranty period, should all instructions within the contents of this manual be correctly adhered to then the repair of the device will be completed free of charge to the individual.
2. If a malfunction occurs during the warranty period and you request a repair, prepare this document and the product, and please contact the sales outlet from which you purchased the unit.
3. In the following cases even within the warranty period, a charge will be assessed to repair the unit.
 - (1) Without this document.
 - (2) If there is no date of purchase, name, sales outlet name written in this document or sales receipt (proof of purchase) .
 - (3) Errors in use, breakdown and damage due to improper repair or remodeling.
 - (4) Failure and damage due to dropping, transportation, etc. after purchase.
 - (5) Failure and damage due to fire, natural disasters (earthquakes, wind and flood damage, lightning etc.) , pollution, salt damage, gas hazard, abnormal voltage.
 - (6) When the lexical phrasing of this document has been rewritten or manipulated.
 - (7) Replacement of consumables.
 - (8) When the serial number can not be confirmed.
4. When repairing, we may use recycled or alternative parts. In addition, we will collect the parts replaced through repair and properly dispose of them.

5. This warranty is valid only in the country where the product is originally sold.
6. This warranty card will not be reissued. Please keep it carefully so as not to be lost. This warranty card promises free repair under the conditions and conditions stipulated in this manual. Therefore, this warranty does not limit your legal rights to those who issue warranty certificates (guarantor responsible) and other businesses.

Warranty card

Thank you for purchasing this Aroma product. Please enter the information specified below in case this product needs to be repaired.

Warranty period (repairs free of charge) :
Six months from the date of purchase.

Except in cases where there are local regulations to follow that extend the coverage period.

Purchase date / /
Product name fan diffuser kō

Customer	Name
	Address
	Telephone No. () —
	FAX No. () —
Retailer	Address / Name of store
	Telephone No. () —

※ No retailer information required with a retailer's stamp or label.

Please note that if the warranty is not filled out in full, the warranty may be invalid unless you attach a proof of retail location and purchase date (e.g., a receipt) .

The warranty does not cover defects or damage attributable to customer negligence or error or use of the product in ways not described in the instruction manual.